

# EMIS PCS

## COVID-19 Vaccination Template Guidance

EMIS has released a new “**COVID-19 – Coronavirus vaccinations**” template for practices using our EMIS PCS system.

**COVID-19 - Coronavirus vaccinations [Template is read only]**

**Warnings to consider before vaccination**

- The Pfizer-BioNTech vaccination is only approved for patients aged 16 or over.
- JCVI does not advise COVID-19 vaccination in pregnancy, or in patients who are planning a pregnancy within three months of vaccination. Please discuss with the patient before administering vaccination.
- If the patient has either recently tested positive for COVID-19, or been coded as suspected or confirmed as having COVID-19, vaccination should be delayed.
- If the patient has had a flu vaccine within the past 7 days, then a COVID-19 vaccination should be delayed. Influenza vaccination not found
- COVID-19 vaccination should be delayed if the patient is currently suffering with a high temperature, a new continuous cough or loss/change to their sense of smell or taste.

**COVID-19 vaccination: First dose**

For consistency, add in order: Batch Number/Product Name/Method (IM/SC) Date Given

Left arm  Right arm  Left thigh  Right thigh  Left buttock  Right buttock  Abdomen  Left scapula  Right scapula

Administration of first dose of SARS-CoV-2 (severe acute respiratory syndrome coronavirus 2) vaccine (GMS) 07/01/2021

[Useful links](#) [The Green Book](#)  
[The Yellow Card Scheme](#)

**COVID-19 vaccination: Second dose**

For consistency, add in order: Batch Number/Product Name/Method (IM/SC) Date Given

Left arm  Right arm  Left thigh  Right thigh  Left buttock  Right buttock  Abdomen  Left scapula  Right scapula

Administration of second dose of SARS-CoV-2 (severe acute respiratory syndrome coronavirus 2) vaccine not found

**COVID-19 vaccination not given**

If a vaccination was not given, please select the reason(s) why:

Vaccination dose declined  SARS-CoV-2 (severe acute respiratory syndrome coronavirus 2) vaccination dose declined not found

First dose declined  SARS-CoV-2 (severe acute respiratory syndrome coronavirus 2) vaccination first dose declined not found

Second dose declined  SARS-CoV-2 (severe acute respiratory syndrome coronavirus 2) vaccination second dose declined not found

Allergy  Allergy to SARS-CoV-2 (severe acute respiratory syndrome coronavirus 2) vaccine not found

Adverse reaction  Adverse reaction to SARS-CoV-2 (severe acute respiratory syndrome coronavirus 2) vaccine not found

Contraindicated  2019-nCoV (novel coronavirus) vaccination contraindicated not found

Not indicated  2019-nCoV (novel coronavirus) vaccination not indicated not found

OK Cancel Previous Data

To ensure practices can use the new template efficiently by adding default batch number/product name/method details into the template, we have created the following guidance which should be completed before copying the new template into your live template folder from the EMIS Repository.

## Step 1 – Enable ‘Injection Site’ Qualifier

The EMIS PCS code database has the following EMIS National Codes for the first and second dose of the COVID-19 vaccine:

- **^ESCT1348323** (Administration of first dose of SARS-CoV-2 (severe acute respiratory syndrome coronavirus 2))
- **^ESCT1348325** (Administration of second dose of SARS-CoV-2 (severe acute respiratory syndrome coronavirus 2) vaccine)

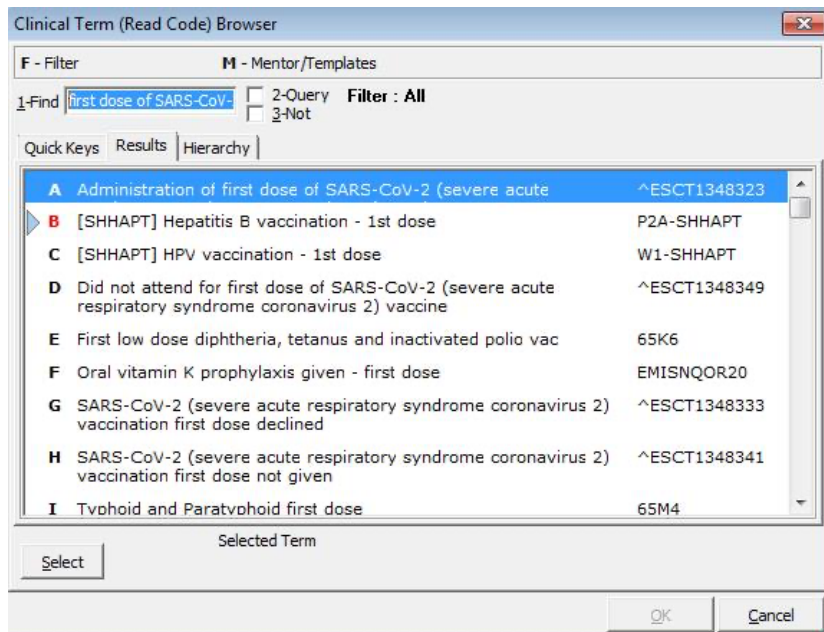
Practices must configure the properties of these codes via the Clinical Term browser using the steps outlined below:

1. On the EMIS PCS main menu, click **Medical Record** in the Medical Records section or type **MR**.  
(If you do not have a current patient selected, you are prompted to choose one using

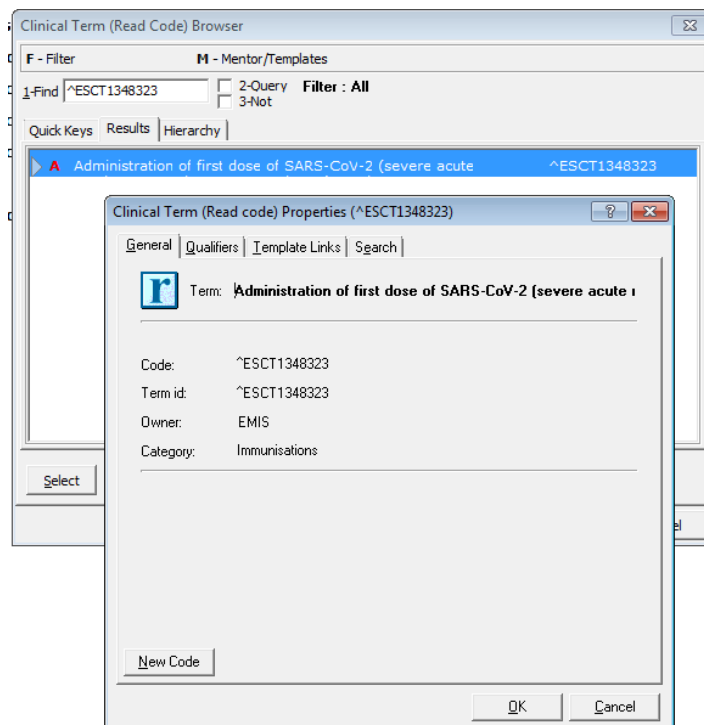


Patient Find – this can be a live or dummy patient).

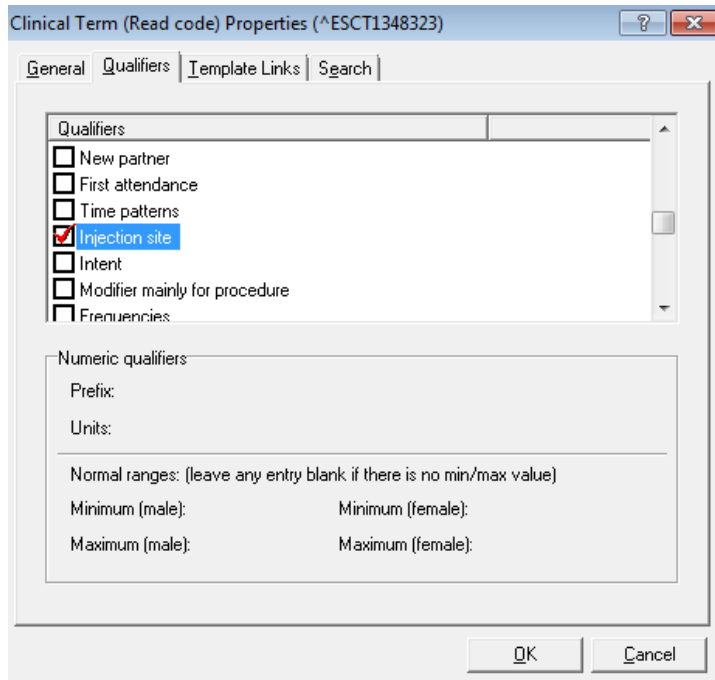
2. Click **Add** or press **A**, and then click Any Clinical Term (Read Code).
3. Use the '**Find**' text box to search for the first dose clinical term.  
(You can type “first dose of SARS-CoV-2” which will find the code ^ESCT1348323).



4. **Right click** on the ^ESCT1348323 code in the results tab and select “properties” from the menu.



5. In the clinical term properties window, open the ‘**qualifiers**’ tab and check the “**Injection site**” box to enable this qualifier for the selected clinical code. Then click ‘OK’.

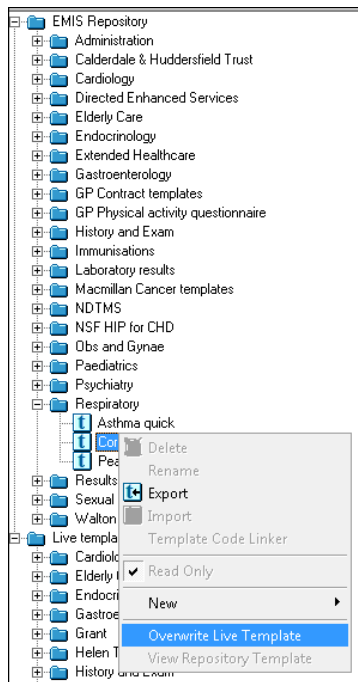


6. Follow the above instructions again to apply the same ‘injection site’ qualifier properties to the second dose clinical code ^ESCT1348325 (search for “second dose of SARS-CoV-2” in the clinical term ‘Find’ box).

## Step 2 – Add template from EMIS Repository

To use the “COVID-19 Coronavirus vaccinations” template, practices must copy the template from the ‘EMIS Repository’ folder into their ‘Live Template’ folder.

1. From the main menu, click **Template Designer** in the Configuration section, or type **TD**.
2. Select the **EMIS Repository** folder, and then select the **Respiratory** folder.
3. Right-click the “COVID-19 Coronavirus Vaccinations” template and select **Overwrite Live Template**. Answer Yes to confirm that you wish to overwrite the live template. This may take a few moments.



The template is then displayed in both the EMIS Repository folder and the Live Templates folder. You can use and edit the templates from the Live Templates folder.

## Step 3 – Adding batch number, product name, and method default text

Once the “COVID-19 – Coronavirus vaccinations” template has been copied into your practice live template folder, you can now edit this template and add default text to save time when recording vaccine administration data.

1. From the main menu, click **Template Designer** in the Configuration section, or type **TD**.
2. Select the **Live templates** folder, and then select the **Respiratory** folder and open the “COVID-19 Coronavirus Vaccinations” template.
3. Right-click on the first dose clinical term component on the template and select **Edit Properties**.  
(The Read Code Component Properties screen is displayed).
4. Click on the ‘**Advanced**’ tab
5. In the “**Prompt for text to add to consultation**” settings you can add a default Batch Number, Product Name and Method text to save clinicians entering these details manually.  
**Note** – for data consistency, please ensure you add the default text into the template in the correct format which is “Batch Number/Product Name/Method (IM/SC)”.

Clinical term component properties

General | Advanced | Qualifiers | Last entry

Tool tip: [piratory syndrome coronavirus 2] vaccine

Clinical term component is initially visible       GMS check box       Clinical term checked

Prompt for text to add to consultation      Field width: [40] [BATCH / Product / IM]

Text added automatically to consultation: [ ]

File clinical term in consultation as: [ ]

Read code is filed as an: [Active problem]

Clinical term is filed as a: [Significant problem]

Duration of problem: [+28] days

OK    Cancel    Help

6. Click 'OK' to save the changes

You can now start to use the template to record COVID-19 vaccine administration.